



Project manager info:
Creating projects with STAR MT

Valid from Transit NXT Service Pack 14
2021-08



1 Creating projects with STAR MT

In this document, you will find out how to create Transit projects that use STAR MT. You are in the right place if you want to provide your translators with projects that contain translation suggestions from STAR MT.

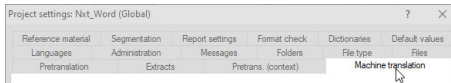
- What is different about STAR MT?** As always, project files are imported into Transit and pretranslated using reference material. This does not change with STAR MT.
- What is new? During the import, untranslated segments are transferred to STAR MT. STAR MT runs a machine translation (MT) and returns the results of this as MT suggestions. These are displayed in the Transit editor as additional translation suggestions.
- Where do the MT suggestions come from?** The MT suggestions are created automatically when you import the project into Transit. To include MT suggestions, select an “MT engine” that has been specially trained for the customer using their reference material and terminology. The MT suggestions are automatically packed into the PPF file that you send to your translators.
- For which projects is STAR MT suitable?** Whether or not a project is suitable for machine translation mainly depends on the MT engine that is selected – and how well this MT engine “fits” the current project. In case of doubt, ask the person responsible for your machine translation which MT engine is suitable for your project.
- The number of target languages has no effect on this: You can use STAR MT for both single-language and multi-language projects.
- Our recommendation: Give it a try and offer your translators the added support of MT suggestions. Translators treat these suggestions pragmatically as they would for fuzzy matches: If the suggestion helps you, use it. If it does not, then do not use it.
- What will change for me, as a project manager?** When creating a project, you only have to tick the box for machine translation and select the appropriate MT engine (» [Selecting an MT engine](#), page 4). As with all project settings, you can also save this in a project template so that you can always use the same settings for similar projects.
- When it comes to exchanging projects, the process remains the same: When you pack the project as a PPF file, the MT suggestions are automatically packed in with this. The translator does not need a special Transit licence or access to the STAR MT server.

What will change for my translators? When it comes to handling projects, nothing will change for the translator: They unpack, edit, pack and deliver the projects as before. The new aspect is that, while they are translating, they will be offered additional translation suggestions that have been created with the help of machine translation.

The most important information for translators who work with these projects is summarised in the document » [“Transit – Translator info: Using STAR MT suggestions”](#).

What do I need? ● Current Service Pack/licence number

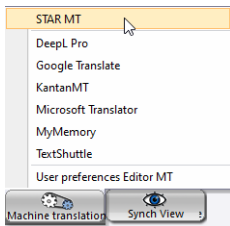
To create MT suggestions, you require Transit NXT with STAR MT support (enabled by the licence code):



If you have the correct licence, you will see the **Machine translation** tab in the project settings.

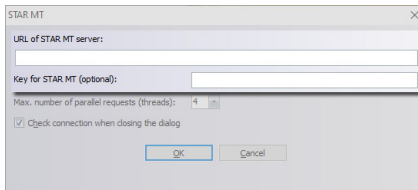
If Transit does not display the **Machine translation** tab, contact the person responsible for your MT or your administrator.

● Connecting to the STAR MT server



You can use the **Machine translation** resource to establish the connection to the STAR MT server.

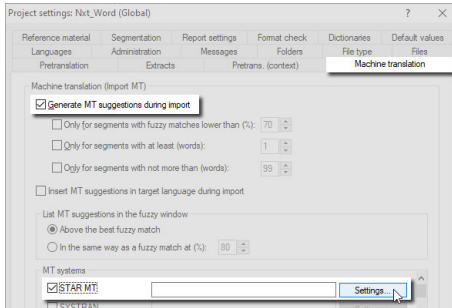
Enter the URL for the STAR MT server and, as an option, enter a key:



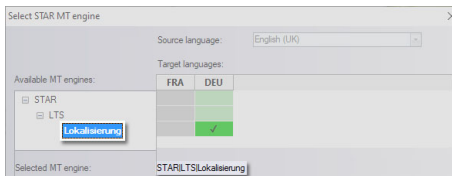
You can obtain the URL and key from the person responsible for your MT or your administrator.

After confirming your input with **OK**, Transit displays an overview of the MT engines and the language directions of the STAR MT server.

Selecting an MT engine How do I define the project settings for the machine translation?



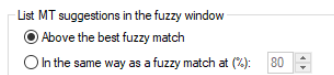
- Select **Generate MT suggestions during import** and **STAR MT**. Then click **Settings**.
- In the following window, double-click the desired MT engine (» **Tip: Displaying details about the MT engine**, page 5):



Example: Double-click **Lokalisierung** to select the MT engine.

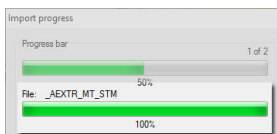
If the name of the desired MT engine is displayed at the bottom (in the example, this is **STAR|LTS|Lokalisierung**) and the supported target languages are checked, click **OK**.

Controlling how MT suggestions are displayed In the project settings, you can define how MT suggestions are listed in the translator's fuzzy window: Above the best fuzzy match or in the same way as a fuzzy match that has a certain quality level.



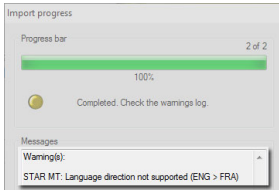
The translator can adjust this setting at any time to suit their needs.

Machine translation in the "Import progress" During the import, Transit sends untranslated segments to STAR MT, and STAR MT sends back MT suggestions. You can also see that this is happening in the **Import progress** window:



Warning: Language direction not supported

In multi-language projects, Transit may display the following warning:

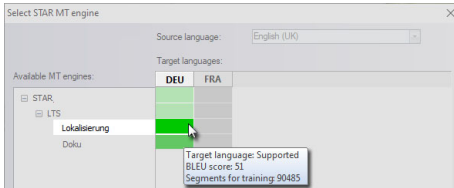


This message means that the selected MT engine does not support all of the target languages for this project.

The project has been imported anyway and can be translated – this just means that the MT suggestions for at least one target language are “missing”.

Tip: Displaying details about the MT engine

When selecting the MT engine (» [Selecting an MT engine](#), page 4), a tool tip displays details about the MT engine and the individual target languages for the project:



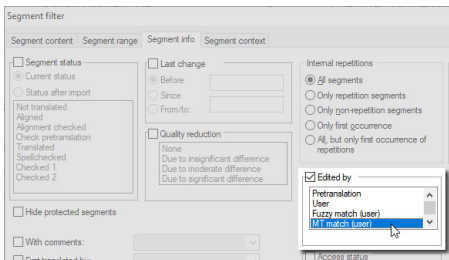
Example: The Lokalisierung MT engine supports the target language German (deu).

You can also tell which target languages are supported by the MT engine without a tool tip by looking at the colours:

- Green: Target language supported
- Yellow: Target language supported as variant
- Grey: Target language not supported

Tip: Filter for MT suggestions

Once you have translated the text, if you then want to specifically check those segments that have been translated with the help of MT suggestions, you can set the following filter:



You can use the **Edited by** MT match (user) segment filter to specifically check MT segments.



www.star-group.net

STAR-Group – Your single-source communication partner for products and services